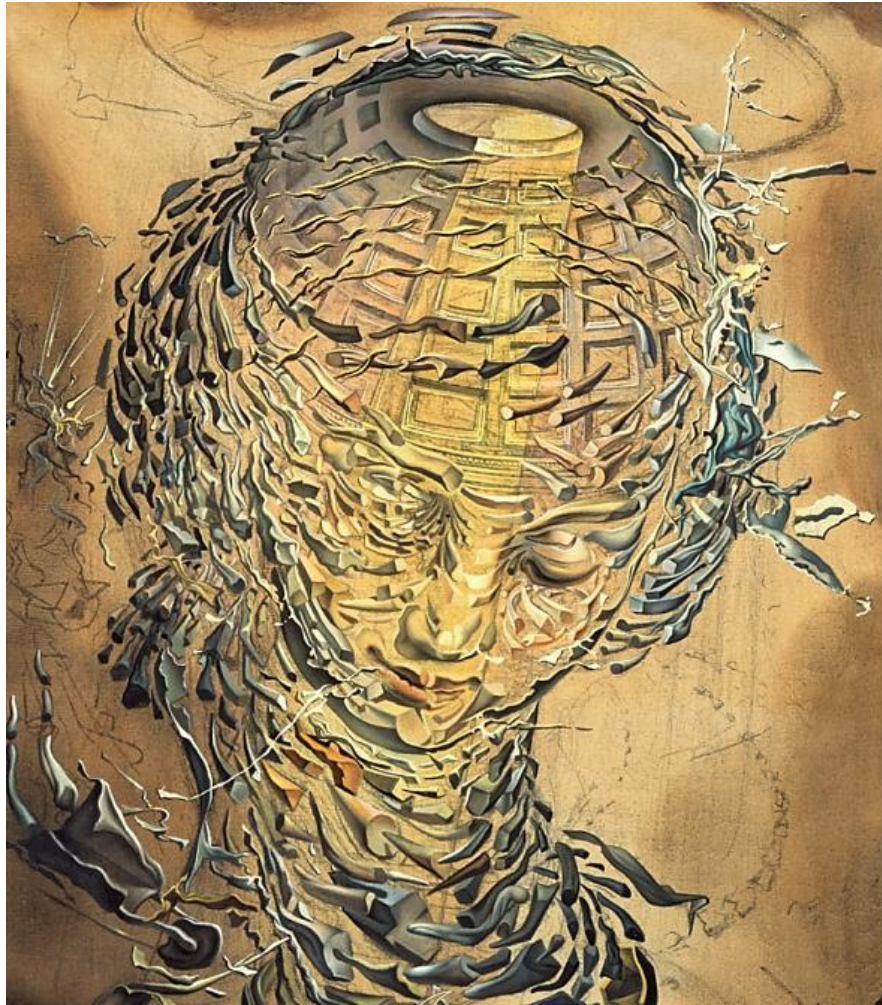




MIND IN WORLD

A History of Distributed Cognition

University
of Tokyo
Center
for
Philosophy



Tete Raphaelesque eclatee [Exploding Raphaelesque Head], Salvador Dalí
© Courtesy of the Scottish National Gallery of Modern Art

Distributed cognition means that the mind is not 'brainbound' but *extends* across brain, body and world. Our project examines evidence of distributed cognition from Classical Greece to Modernism in Europe. Now we want to look at Japan and Asia. Join Dr Miranda Anderson for this lecture if you're interested in:

- *distributed cognition*
- *a history of distributed cognition in Europe*
- *a future project on the history of distributed cognition in Japan and Asia*

Hosted by University of Tokyo Center for Philosophy

Collaboration Room 2, Bldg. 18, Komaba I Campus of the University of Tokyo

18:00–19:30, Thursday 14 December 2017

All welcome

www.hdc.ed.ac.uk



Arts & Humanities
Research Council



The Great Britain
SASAKAWA
FOUNDATION
グレートブリテン・ササカワ財団